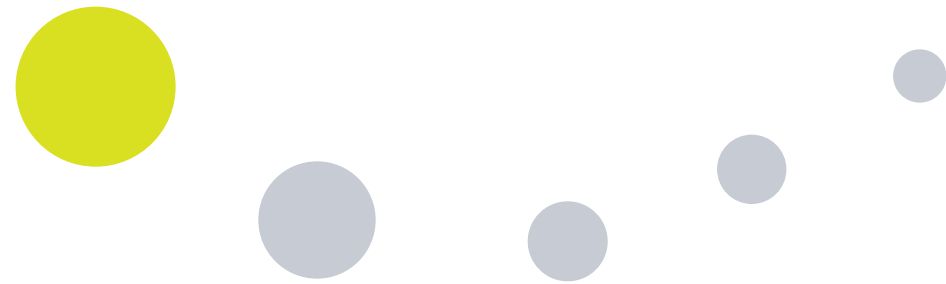


ZIKS Soft



Scale Your Ideas

EXPERTISE



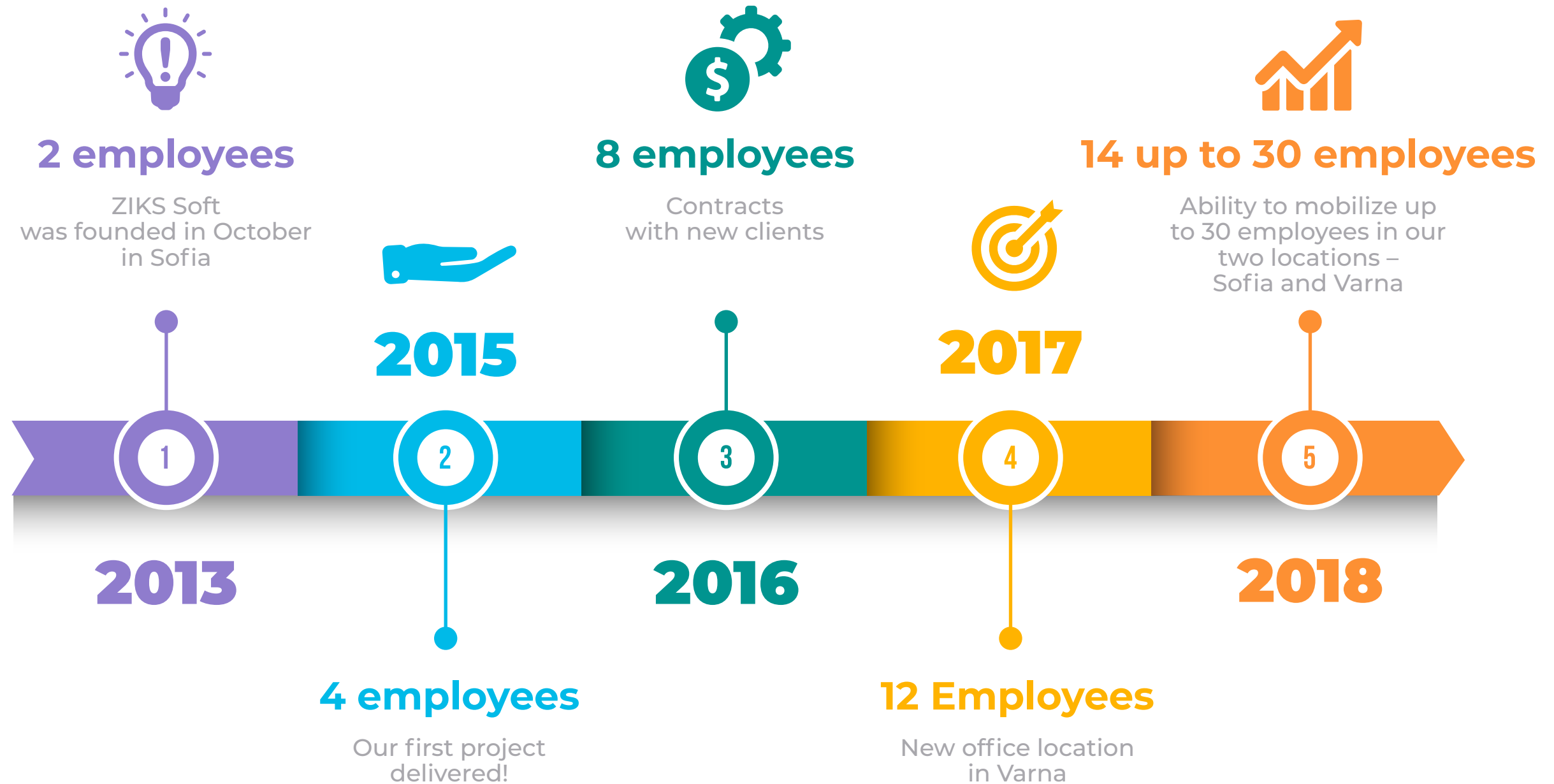
- Backend Cloud Services
- 3rd Party Service integrations
- Big Data and Analytics
- Web Applications
- Mobile User Experience
- User Interface Design

DEVELOPMENT PROCESS



- Agile Methodology
- Dedicated Teams
- Remote Working Culture
- Know Your Product
- Manual and Automated Testing

OVERVIEW



END-TO-END SERVICES



- Accountability and Responsibility
- Cloud Services
- Big Data
- Mobile & Web Development
- Project Management
- Quality Assurance

LEARNING AND SKILLS DEVELOPMENT



- Working with clients with interesting technical portfolio and problems
- Accepting challenges and out-of-expertise tasks
- Great internal culture for learning
- Highly skilled engineers ready to learn every day
- Working with Partner Companies brings additional experience

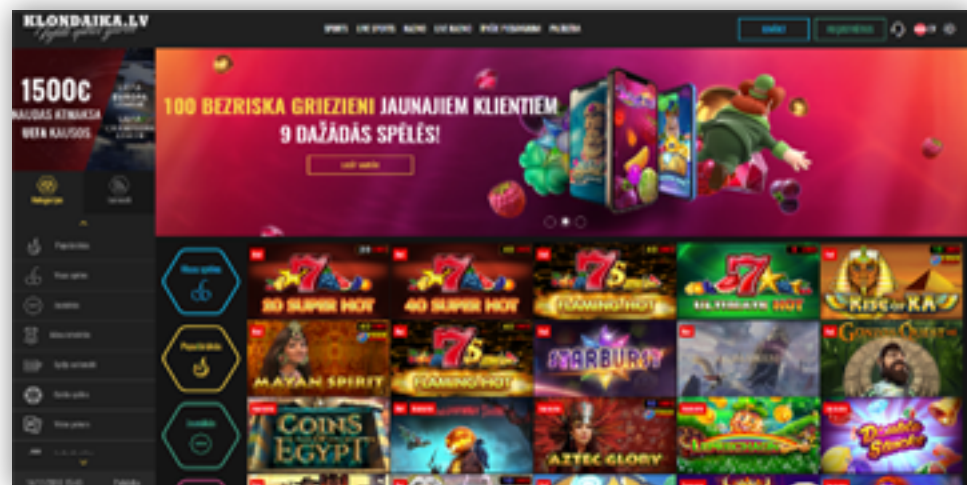
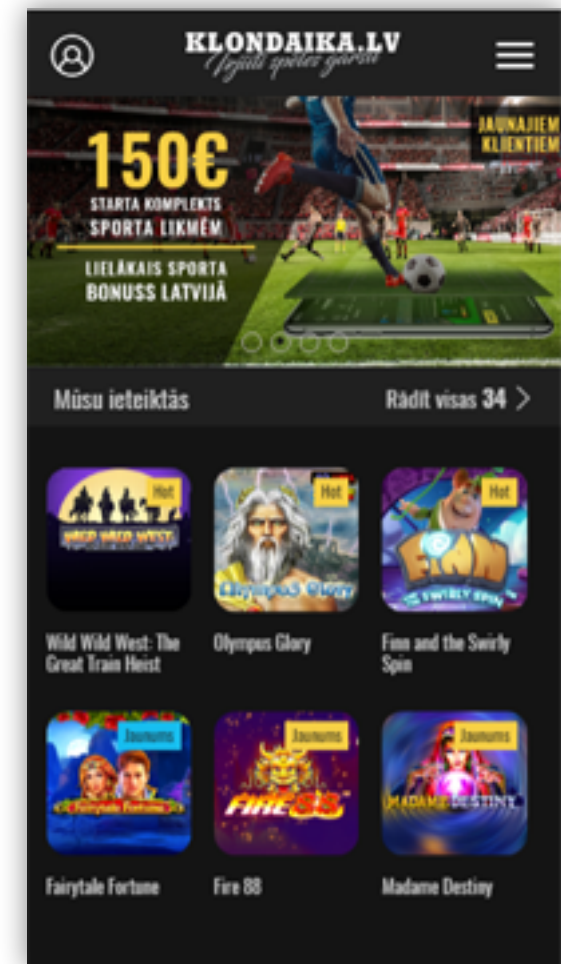
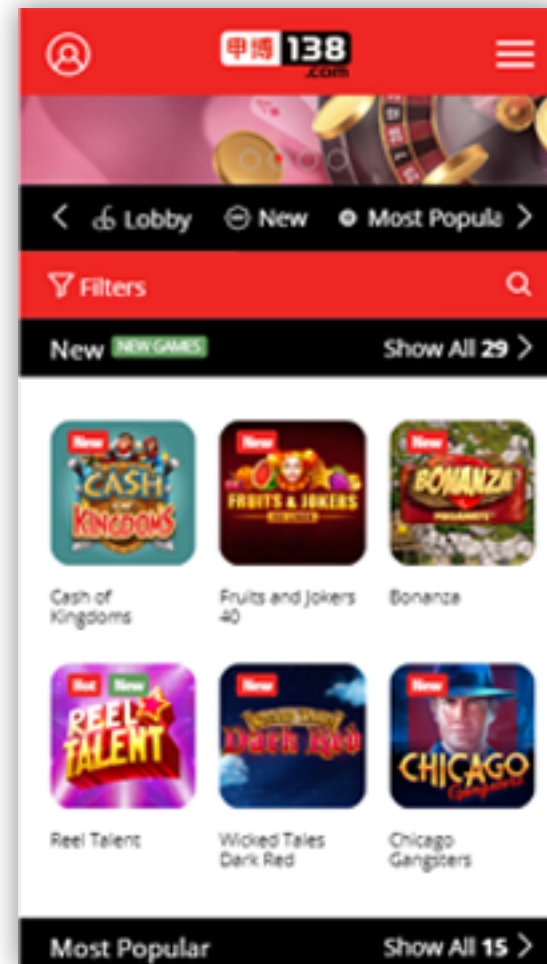
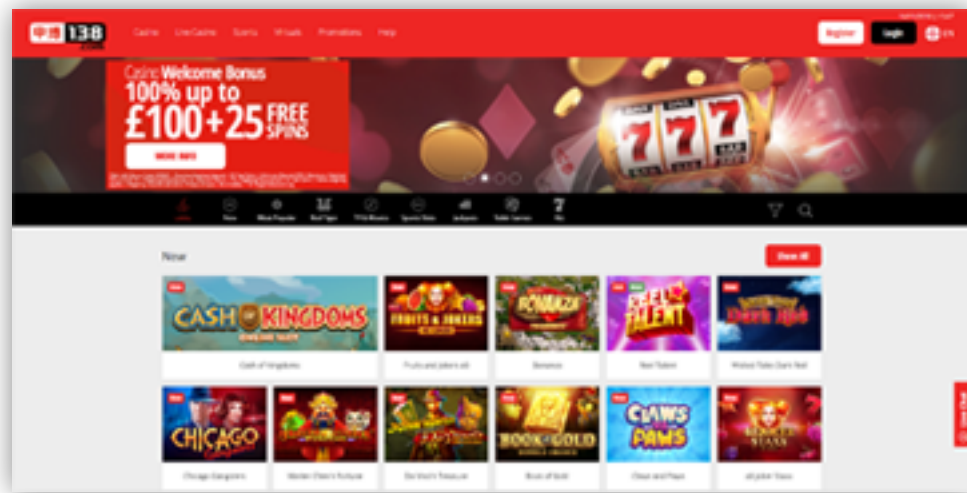
CLIENTS





Experience

DENCH EGAMING PLATFORM



DENCH EGAMING PLATFORM

The Dench platform is the next generation in turnkey gaming solutions, nurturing your bravest gaming ideas. Let us help you optimize your day to day operations and skyrocket ROI.

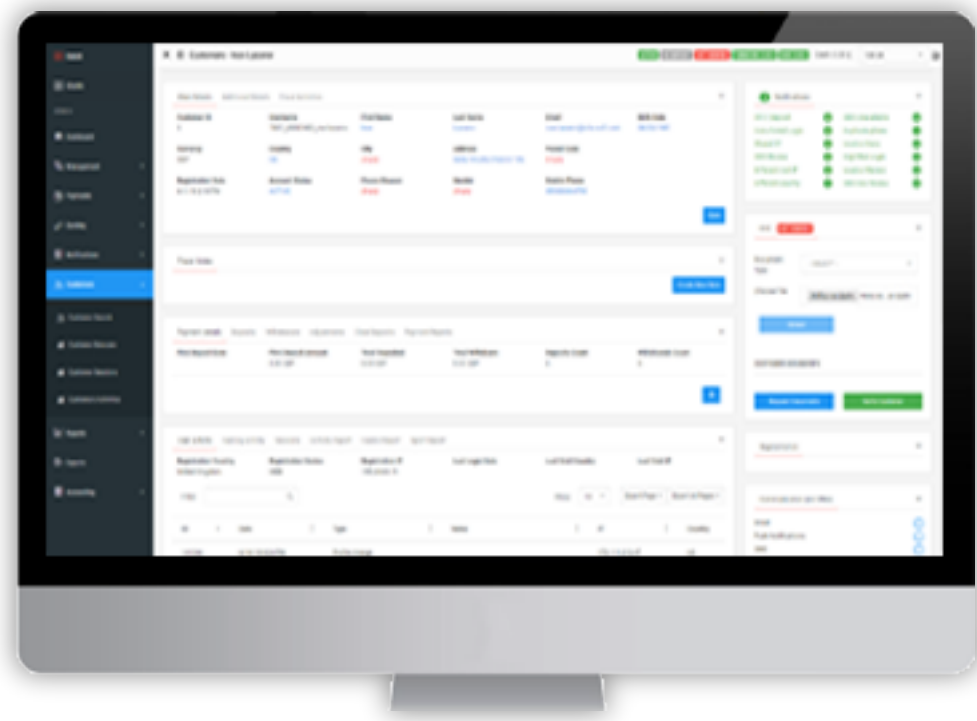
Dench Platform has fully customizable frontend, great mobile experience, Admin application for management, monitoring and analysis.

Its marketing module collects all customers actions in real time and provide functionalities to engage and stimulate customers. Based on the collected data, Dench performs multi-level analysis, segmentation and targeting customers.

Dench provides a lot of reports to analyse customer behaviour and KPIs.

- Backend Cloud Services
- 3rd Party Service integrations
- Big Data, Messaging and Analytics
- Web and Mobile Applications
- NoSQL data storage
- User Interface Design
- Project Management
- Dev Ops Services
- Quality Assurance

DENCH EGAMING PLATFORM

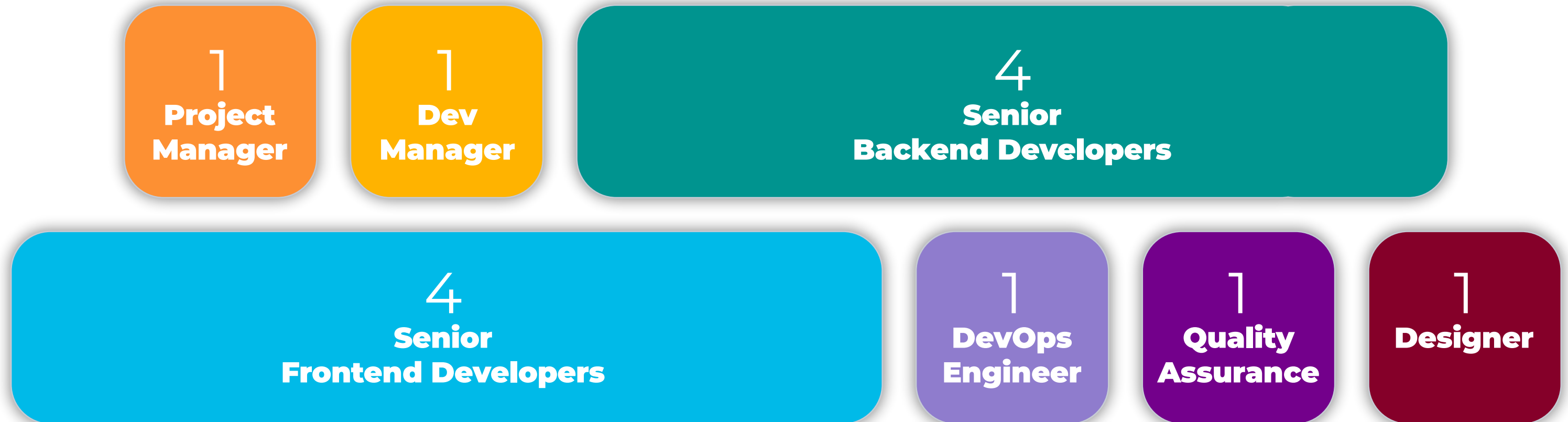


Customer Management



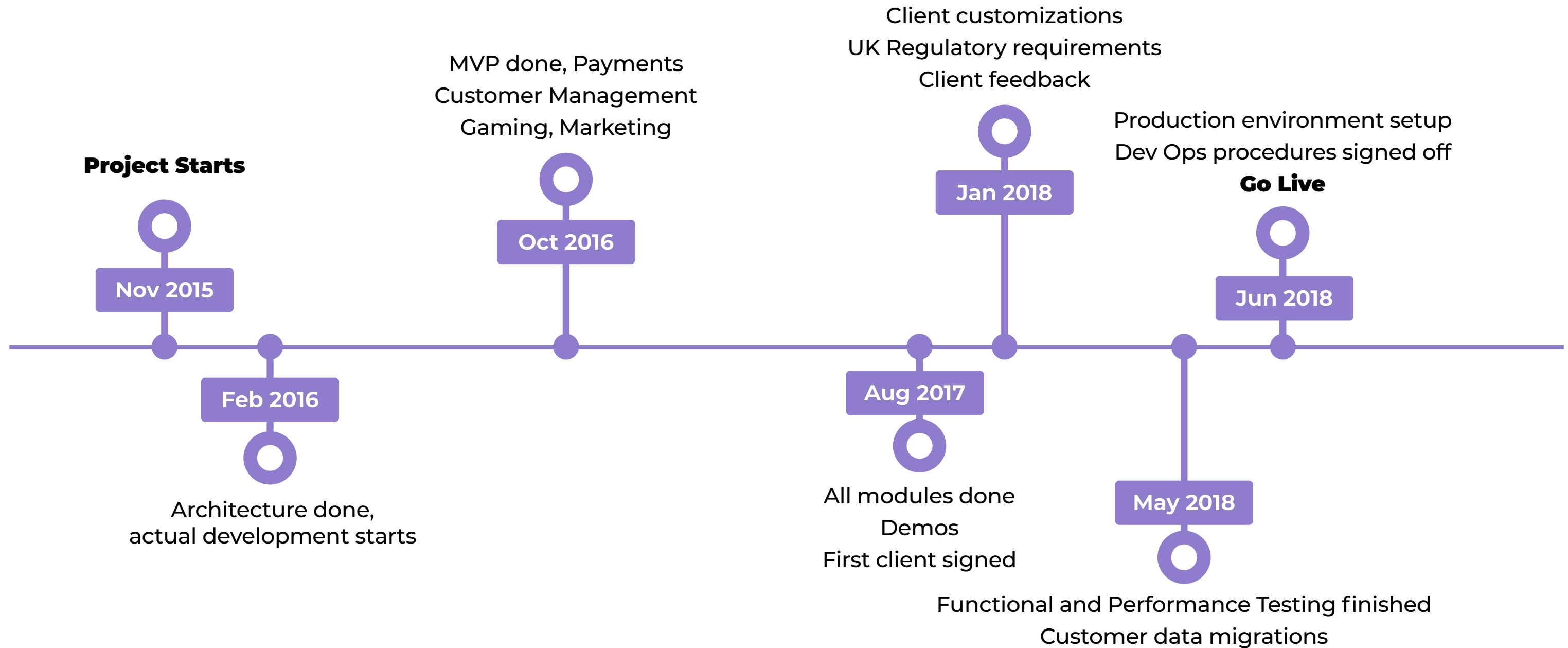
Various reporting UIs

TEAM SCALE



- Scaling from 14 to 30 employees based on the project phase

PROJECT TIMELINE



CLIENT REFERENCE



Dobromir Mitev

Co-Founder & CEO
dobromir@denchsolutions.com

KWARTILE IRONMAN

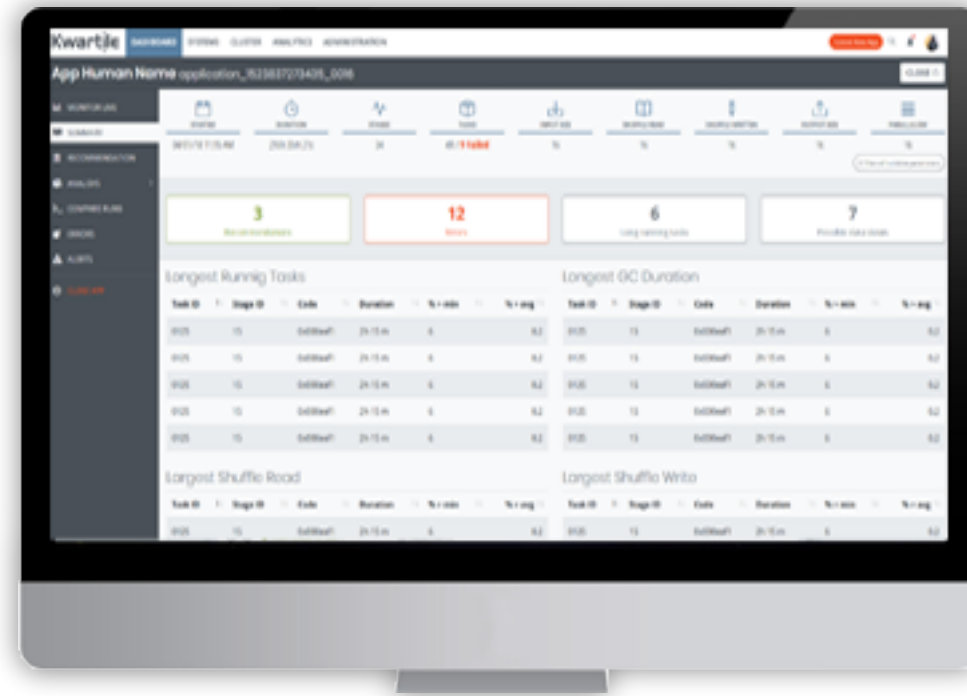
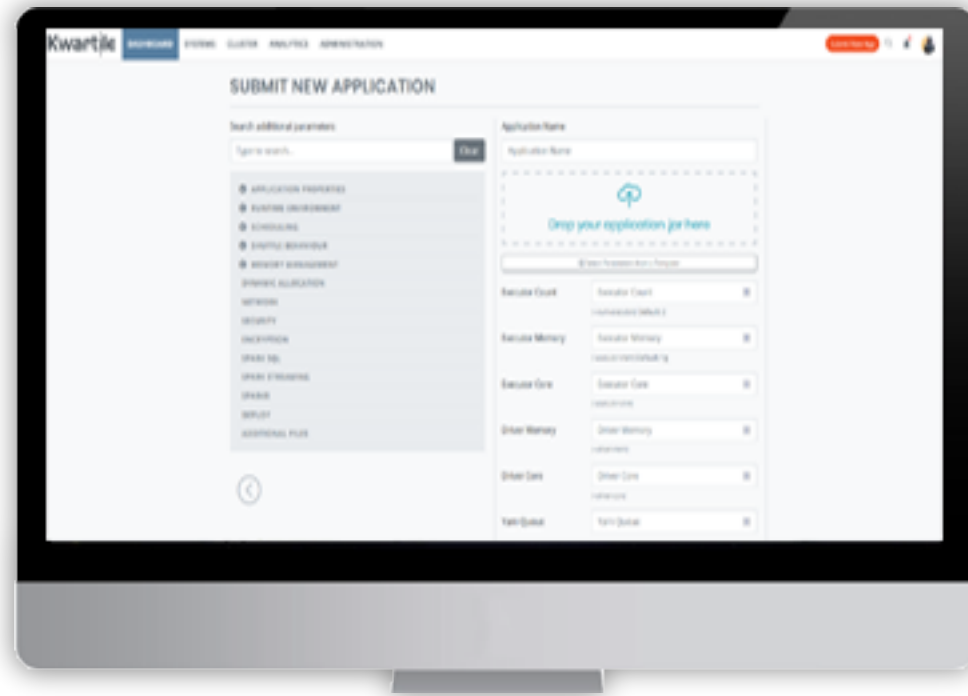
Kwartile Ironman handle the operations around the lifecycle of one Spark application. Its target is to simplify starting a new spark job, helping customers to select appropriate parameters from the UI, live monitor and analyse the application execution.

Using secure channels, Ironman connects to Spark cluster agents and instruct, monitor and check all spark application execution parameters. All collected data is send in real time to a backend cloud service, which store and analyse the data.

Based on the information collected, Ironmen recommend various numbers of optimization in the Spark application – changing runtime arguments, code improvements or parallelism.

- Backend Cloud Services
- Big Data, Messaging and Analytics
- Web and Mobile Applications
- NoSQL data storage
- User Interface Design
- Project Management
- Quality Assurance

KWARTILE IRONMAN





Thank You!